



PanOptimization

Grid-Fin

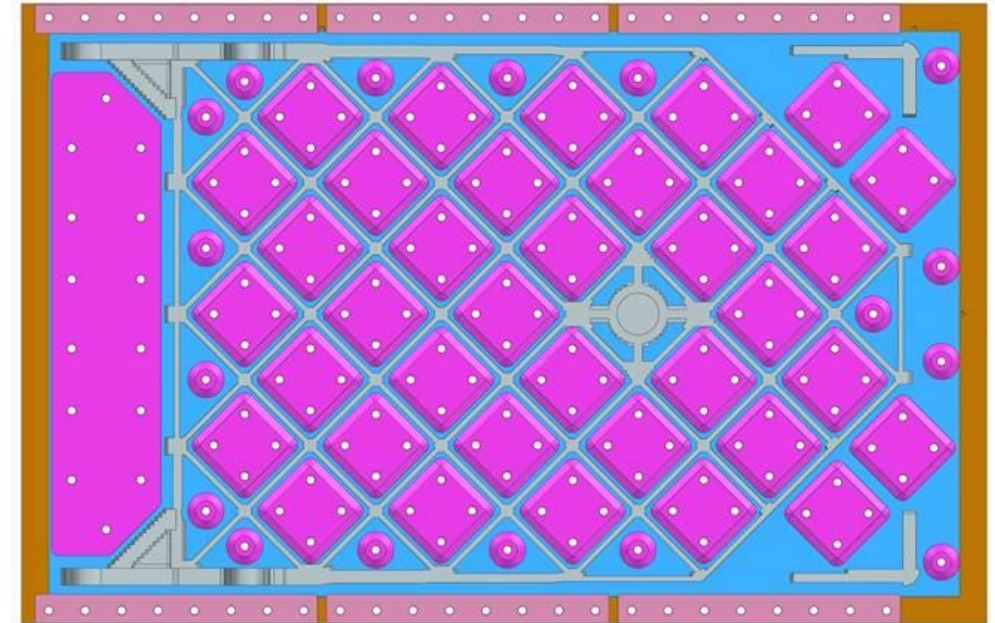
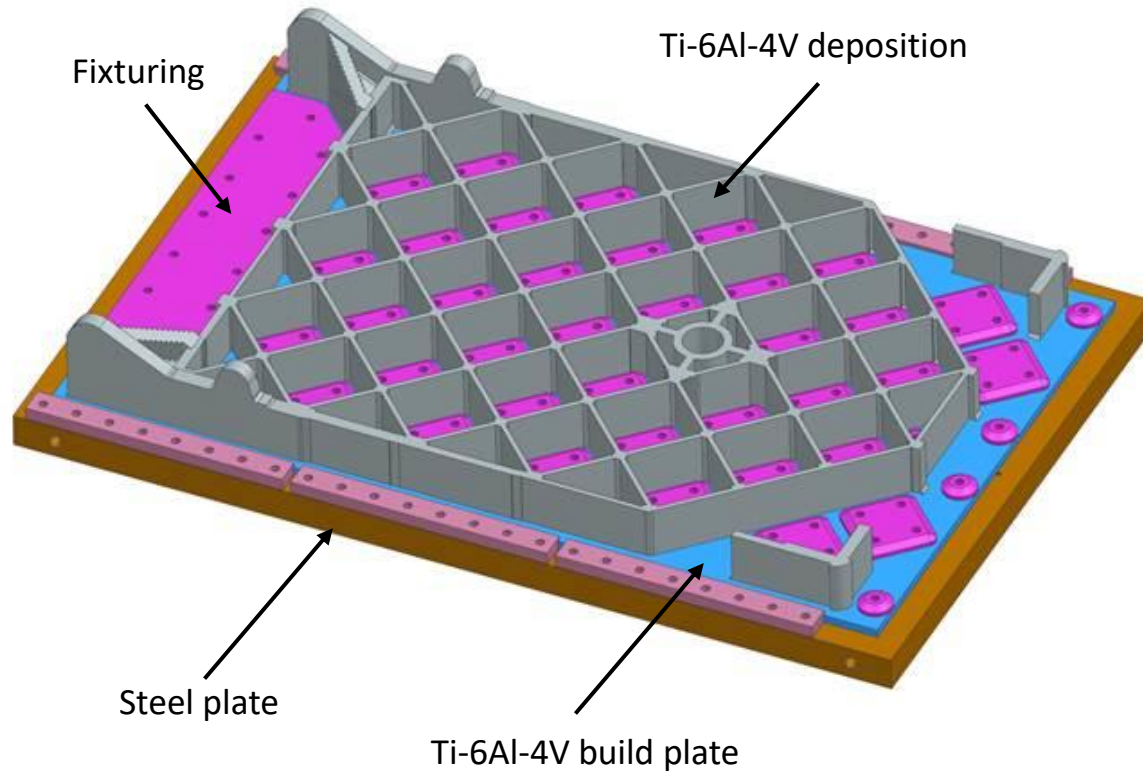


Image courtesy of Ankit Aerospace and Sciaky Inc.

Build plate dimensions = 2.65m x 1.7m

Grid-Fin

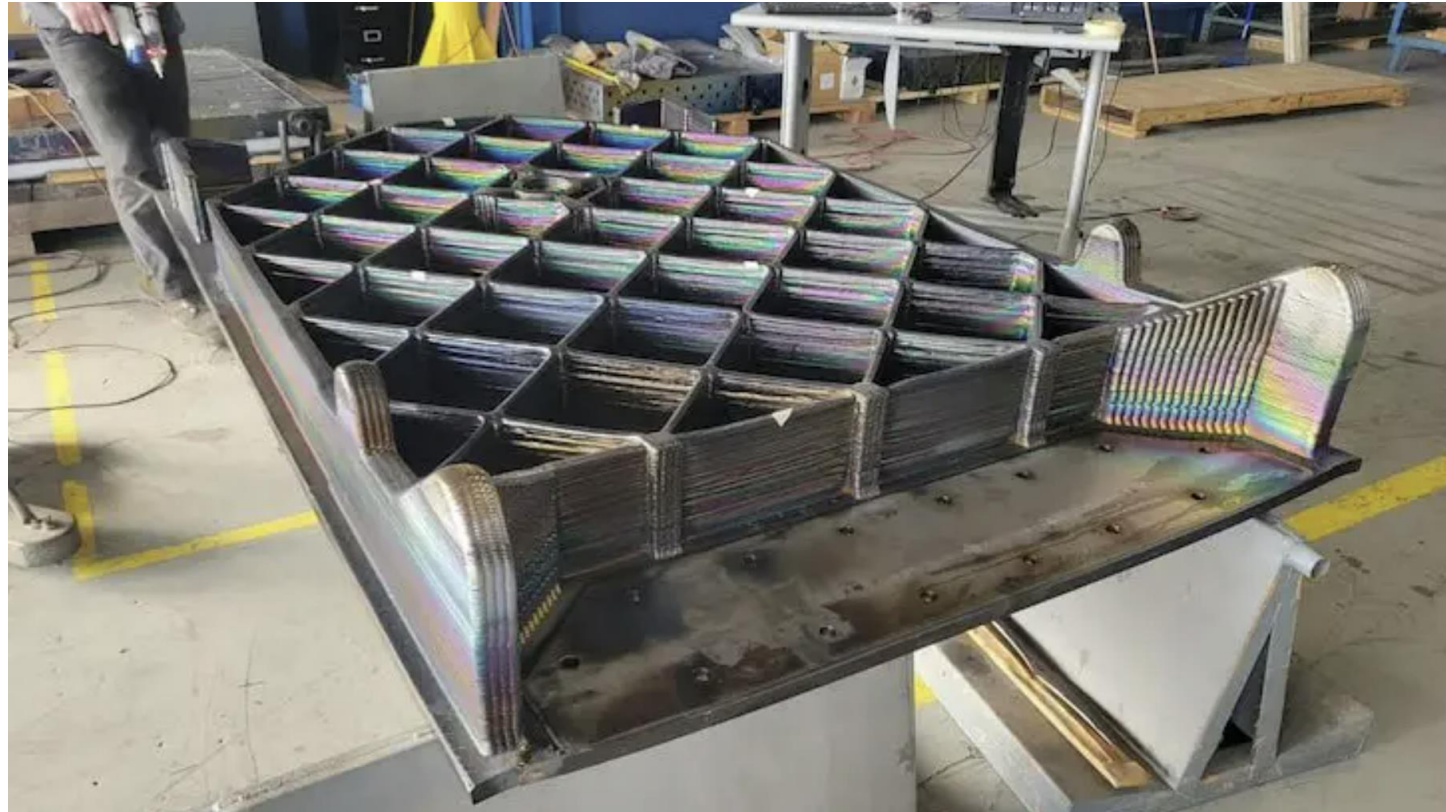
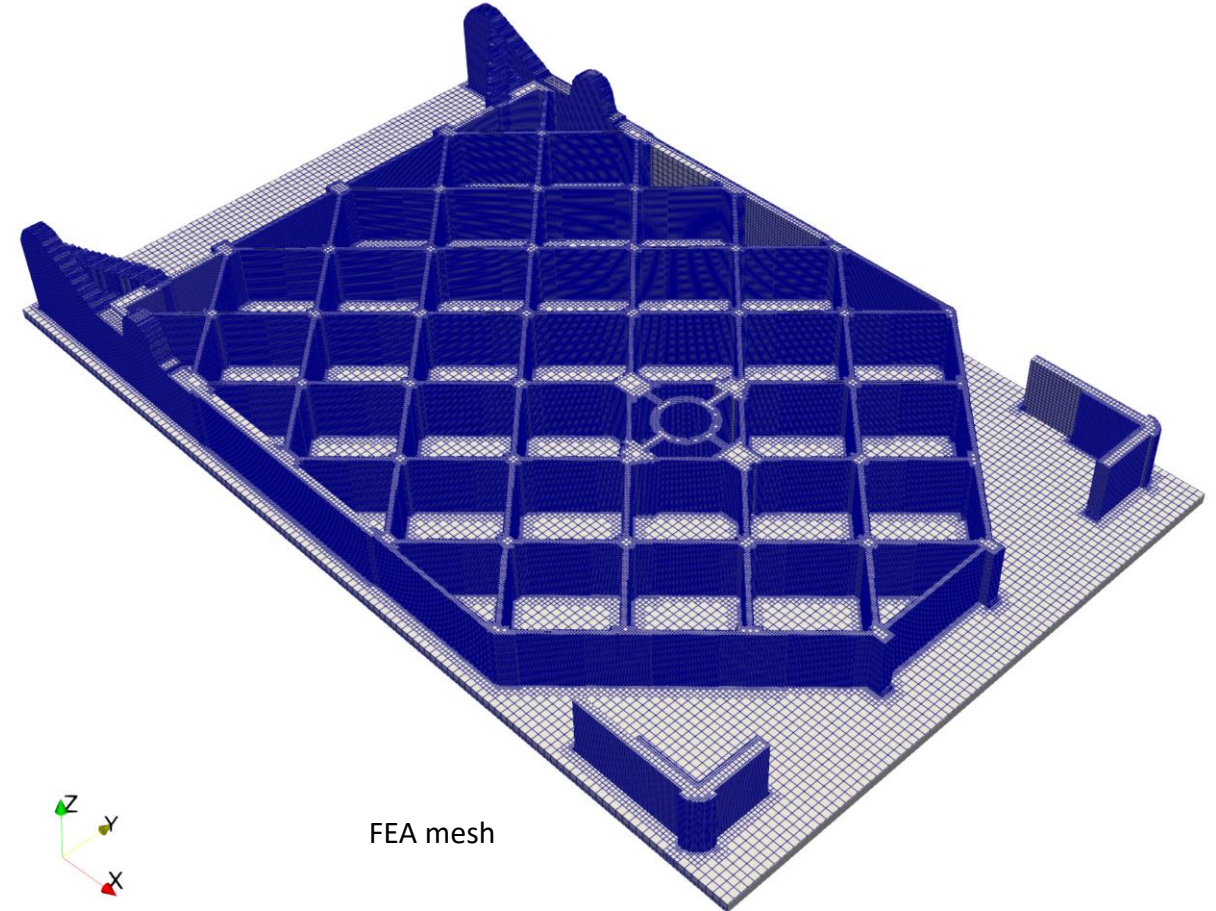
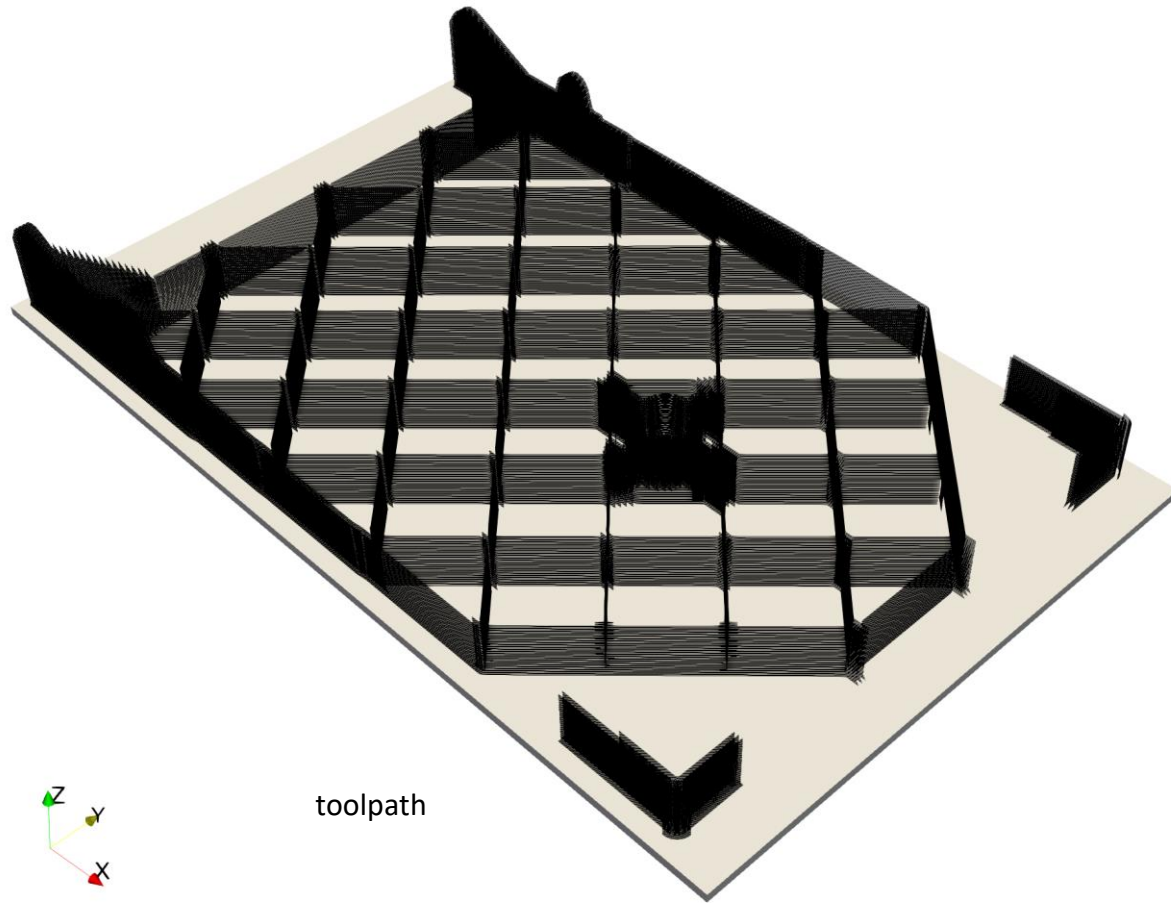


Image courtesy of Ankit Aerospace and Sciaky Inc.

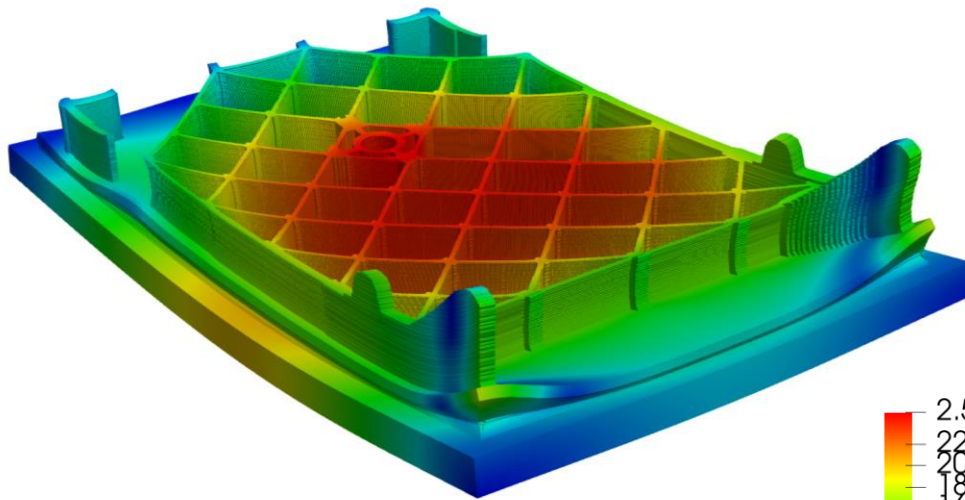
An FEA mesh is generated directly from the toolpath



Grid-Fin simulation results

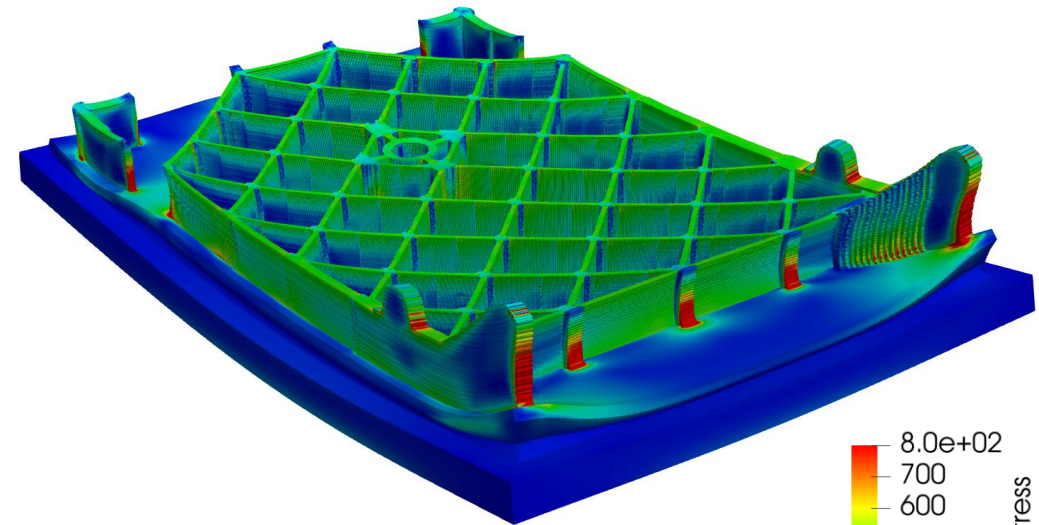
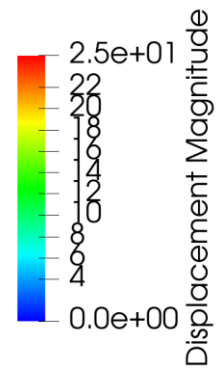
Simulation stats:

- 4.1M nodes
- Runtime = 2.4 hours (48 core CPU)
- Peak memory = 71 GB

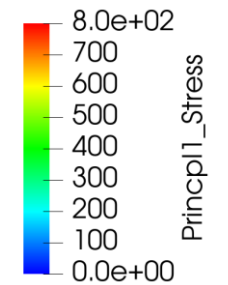


Units: mm

Warp 5x



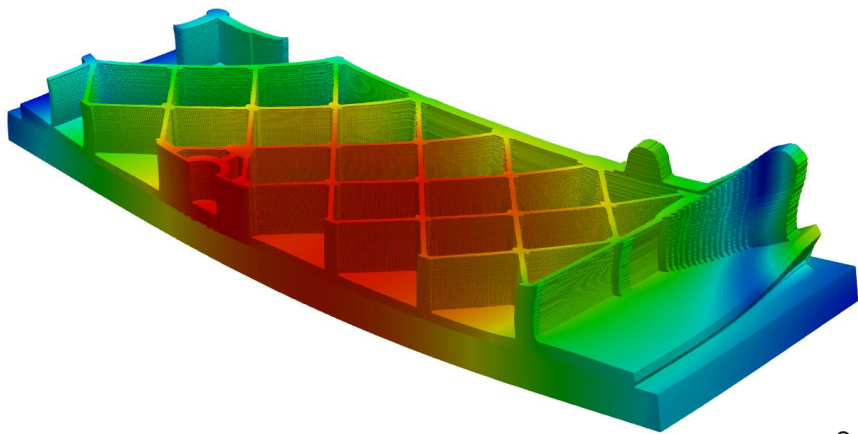
Units: MPa



Grid-Fin simulation results half symmetry model

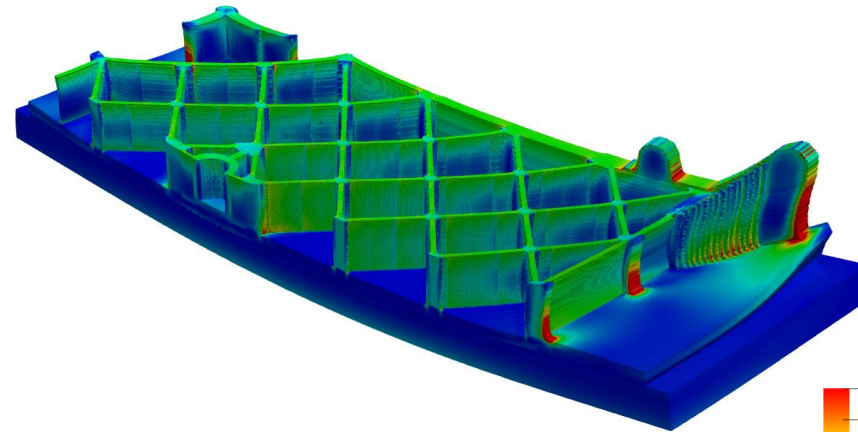
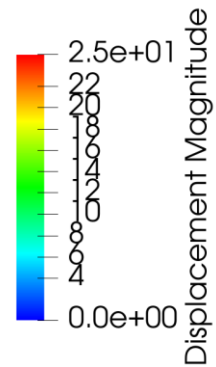
Simulation stats:

- 2M nodes
- Runtime = 34 mins (8 core laptop)
- Peak memory = 22GB

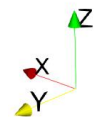
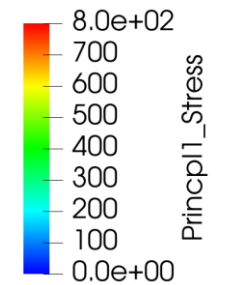


Units: mm

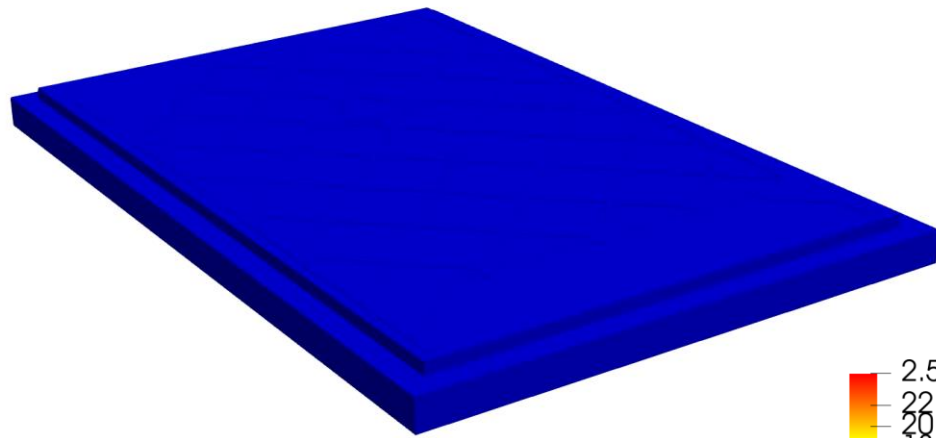
Warp 5x



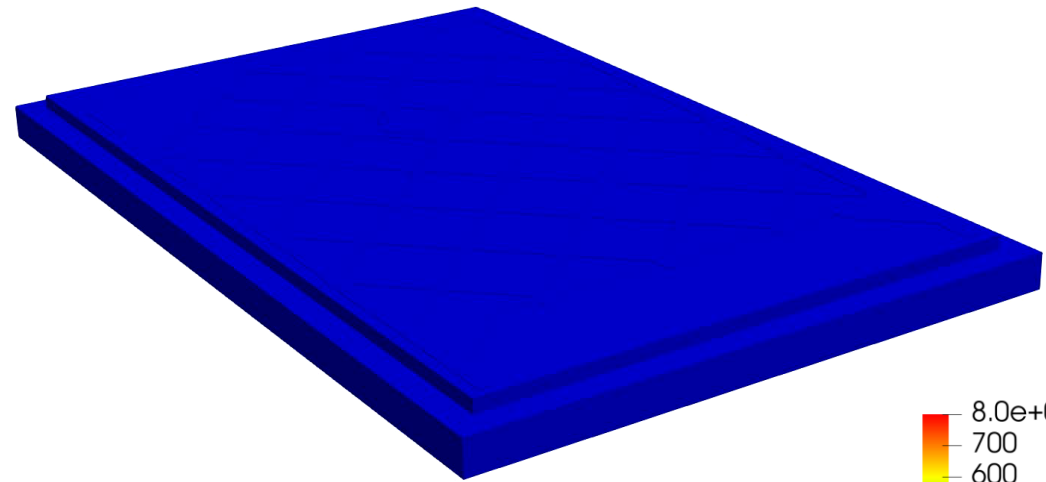
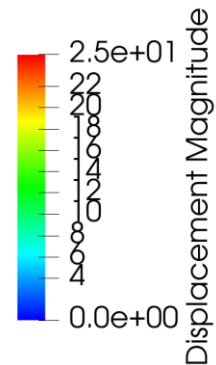
Units: MPa



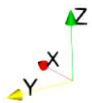
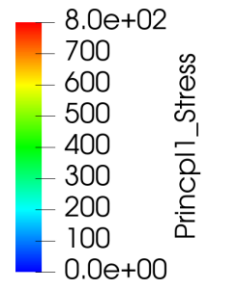
Grid-Fin simulation results video



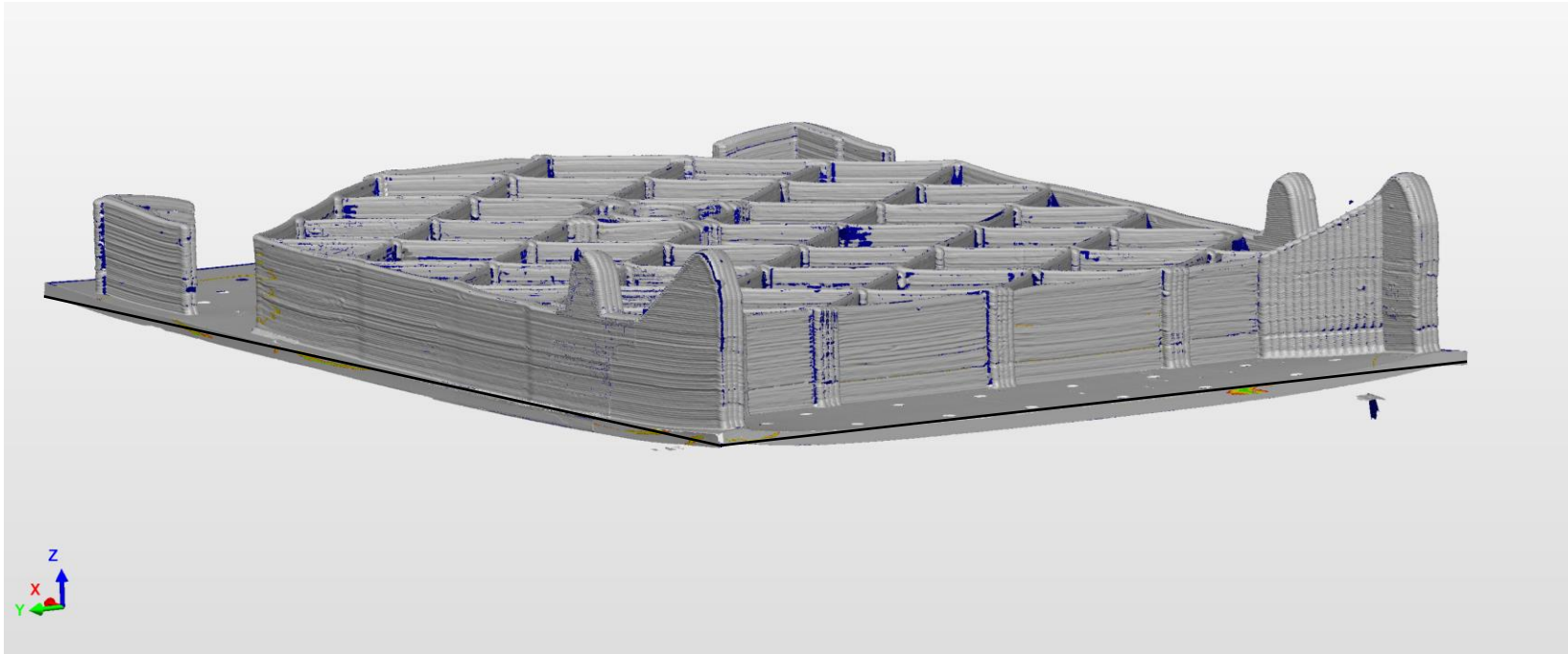
Units: mm
Warp 5x



Units: MPa

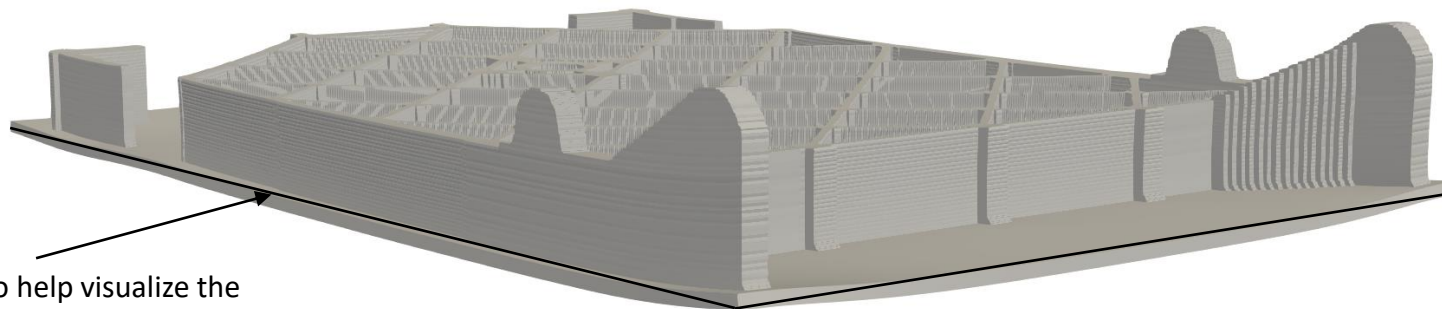


Grid-Fin – distortion trends are visibly captured



Experiment

Image courtesy of Ankit Aerospace and Sciaky Inc.



Simulation

Straight line to help visualize the build plate distortion

Grid-Fin – Simulated distortion magnitudes are in very close agreement with experiment

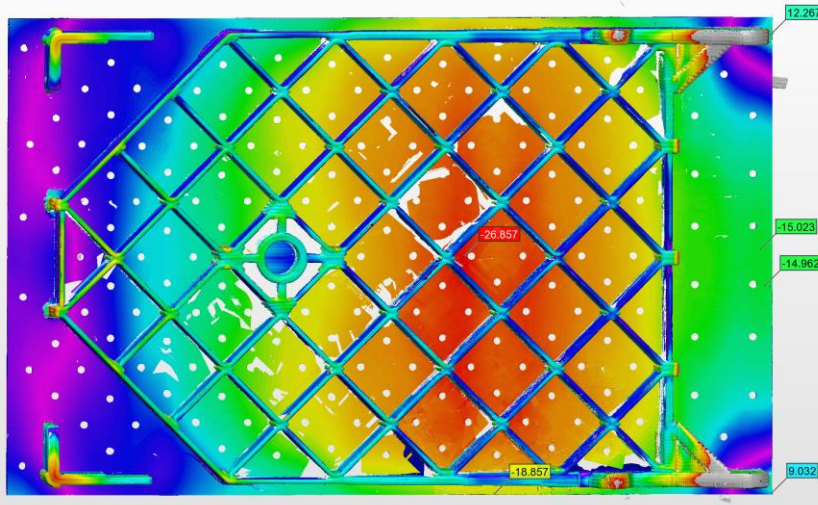
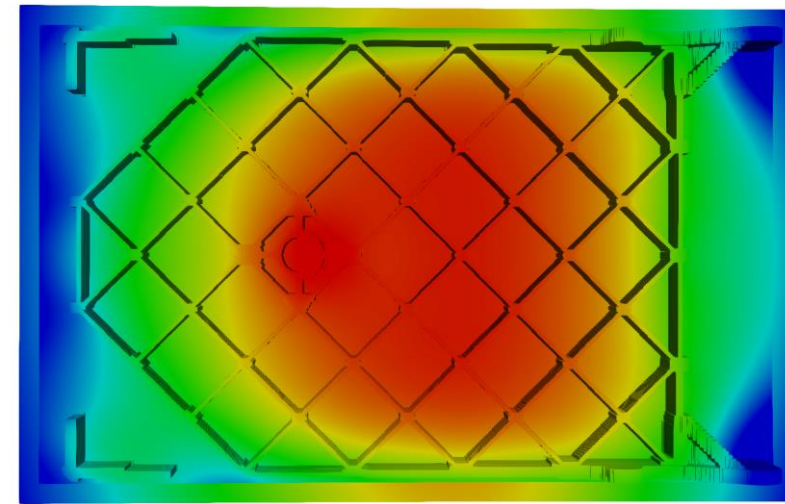


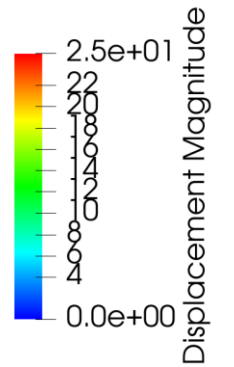
Image courtesy of Ankit Aerospace and Sciaky Inc.

Experiment



Simulation

Units: mm



Grid-Fin – Crack locations correlate to high stress/strain regions in the model

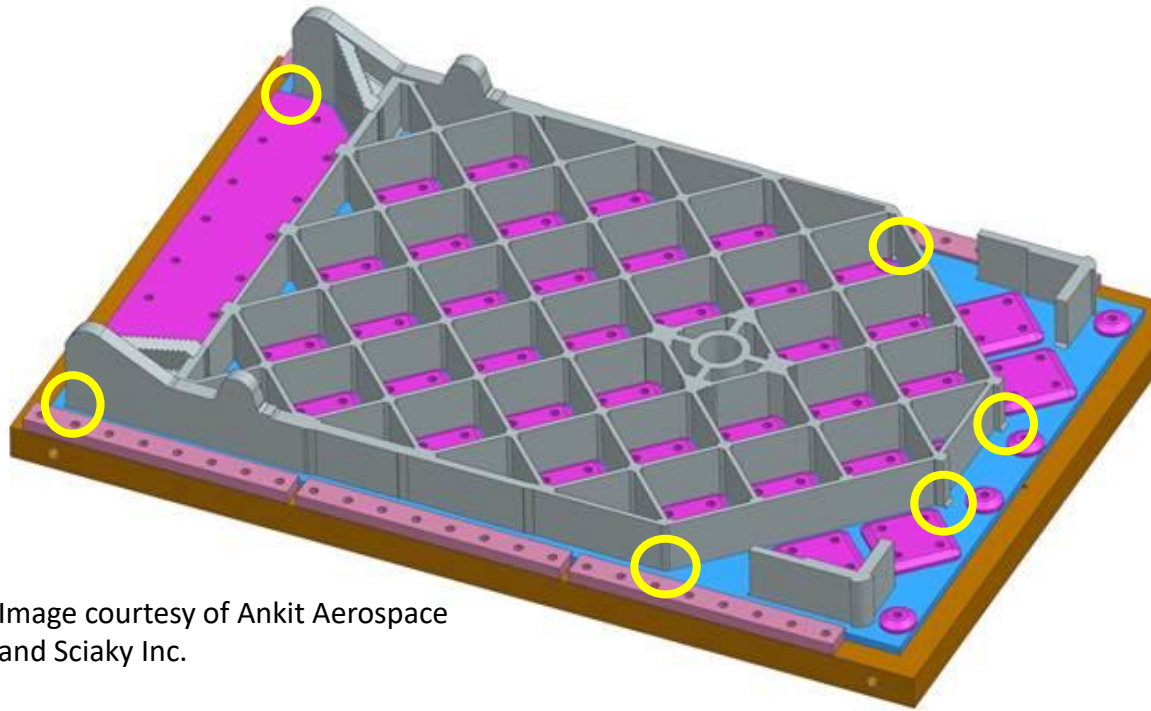
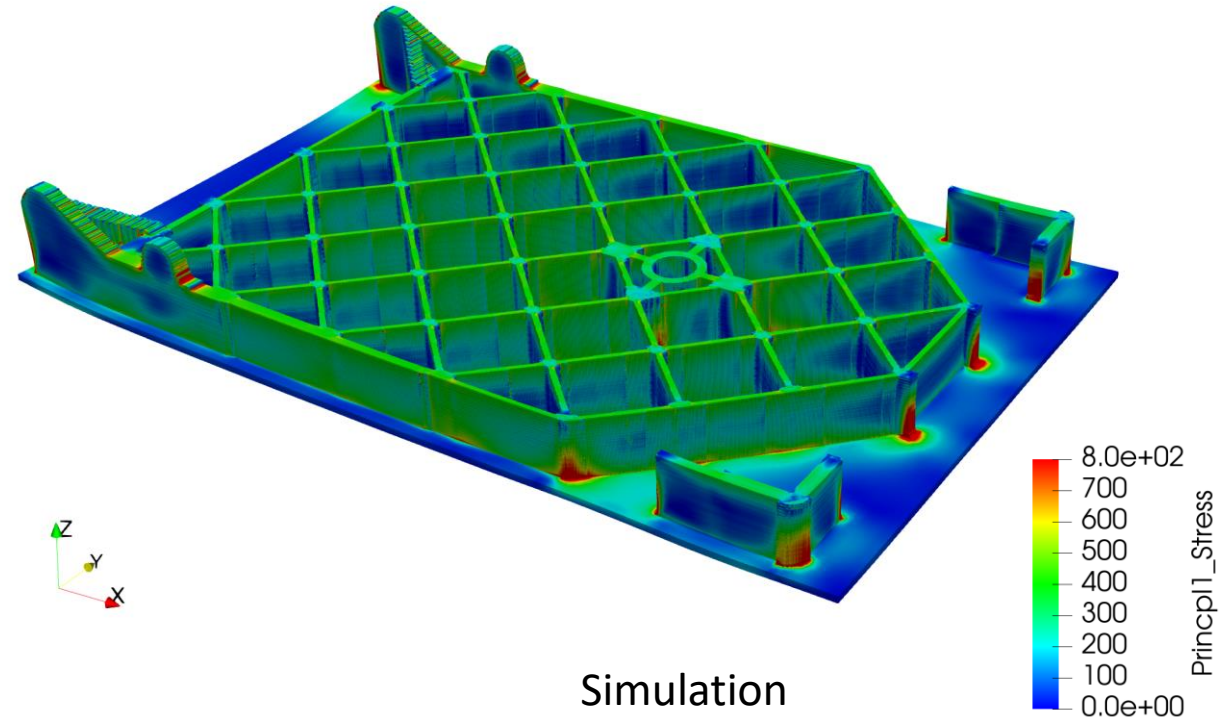
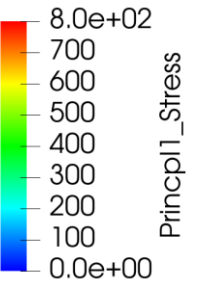


Image courtesy of Ankit Aerospace and Sciaky Inc.

Experiment
(crack locations circled in yellow)



Simulation



Grid-Fin – Crack locations correlate to high stress/strain regions in the model

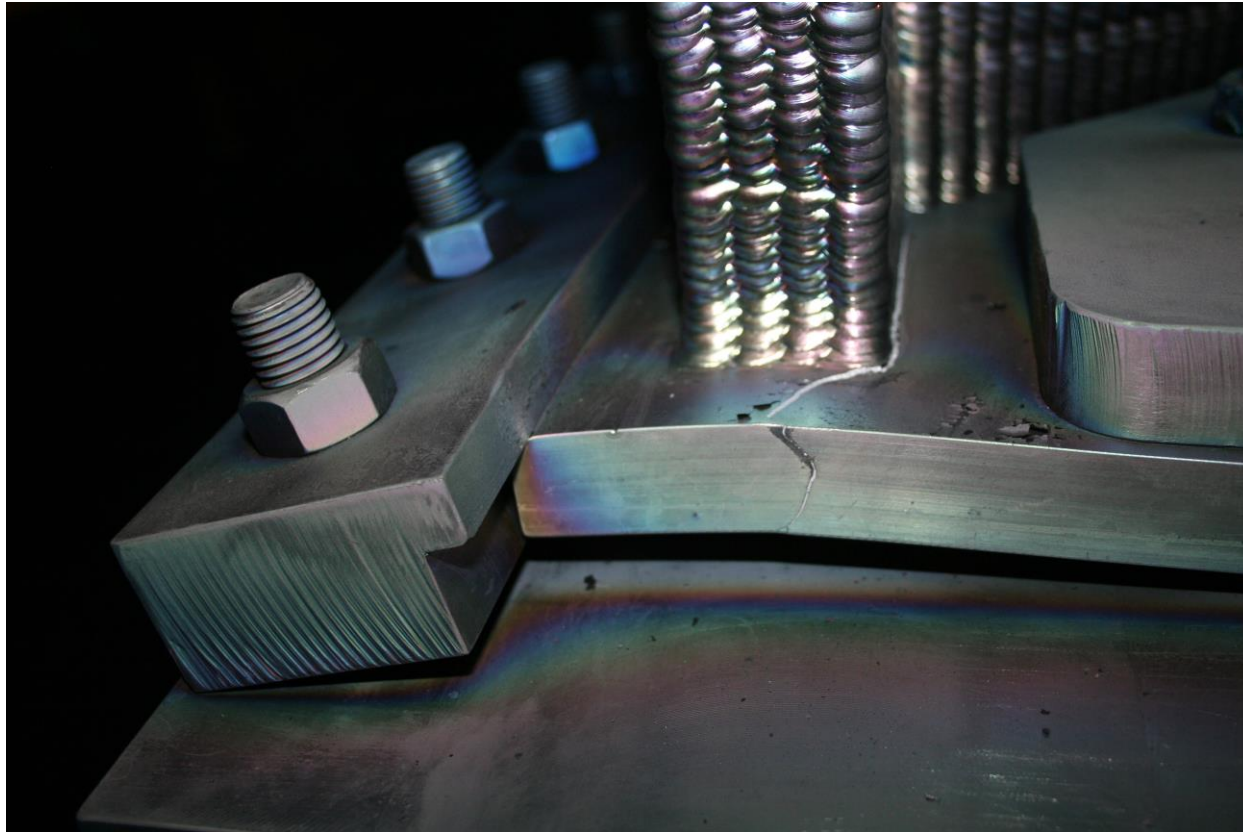
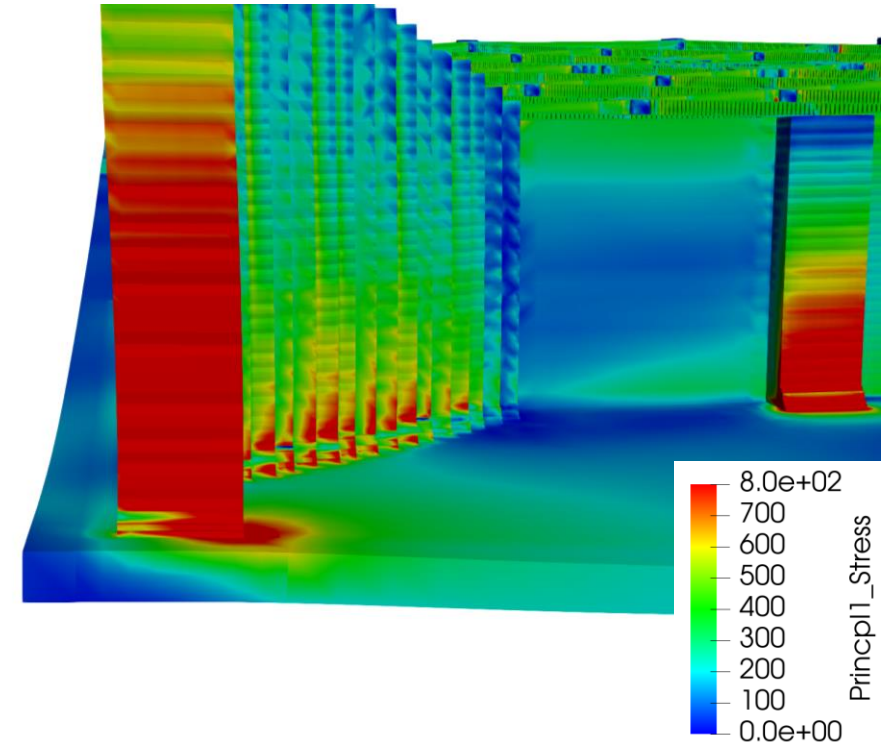


Image courtesy of Ankit Aerospace and Sciaky Inc.



Units: MPa

Grid-Fin – Crack locations correlate to high stress/strain regions in the model

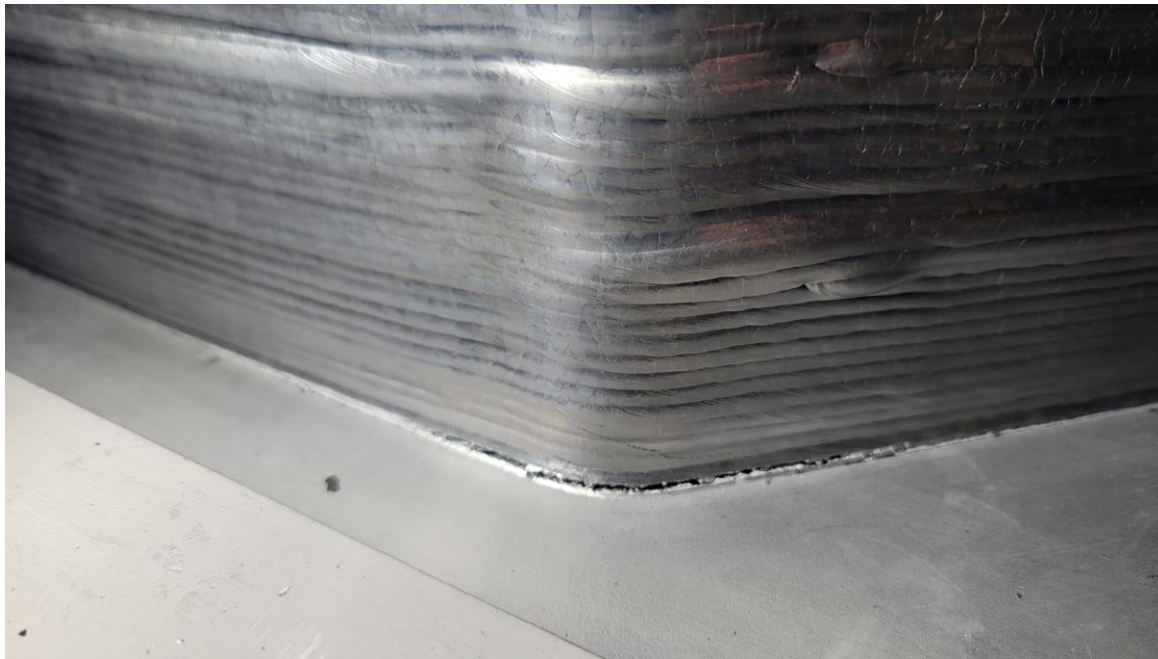
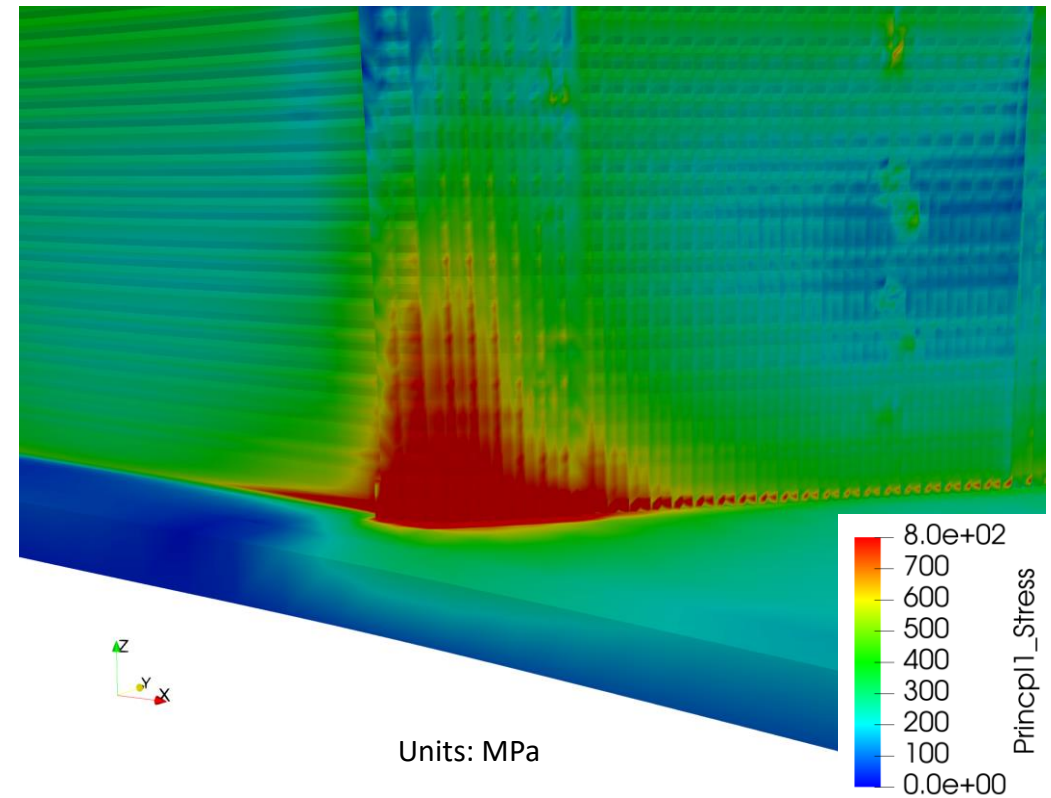


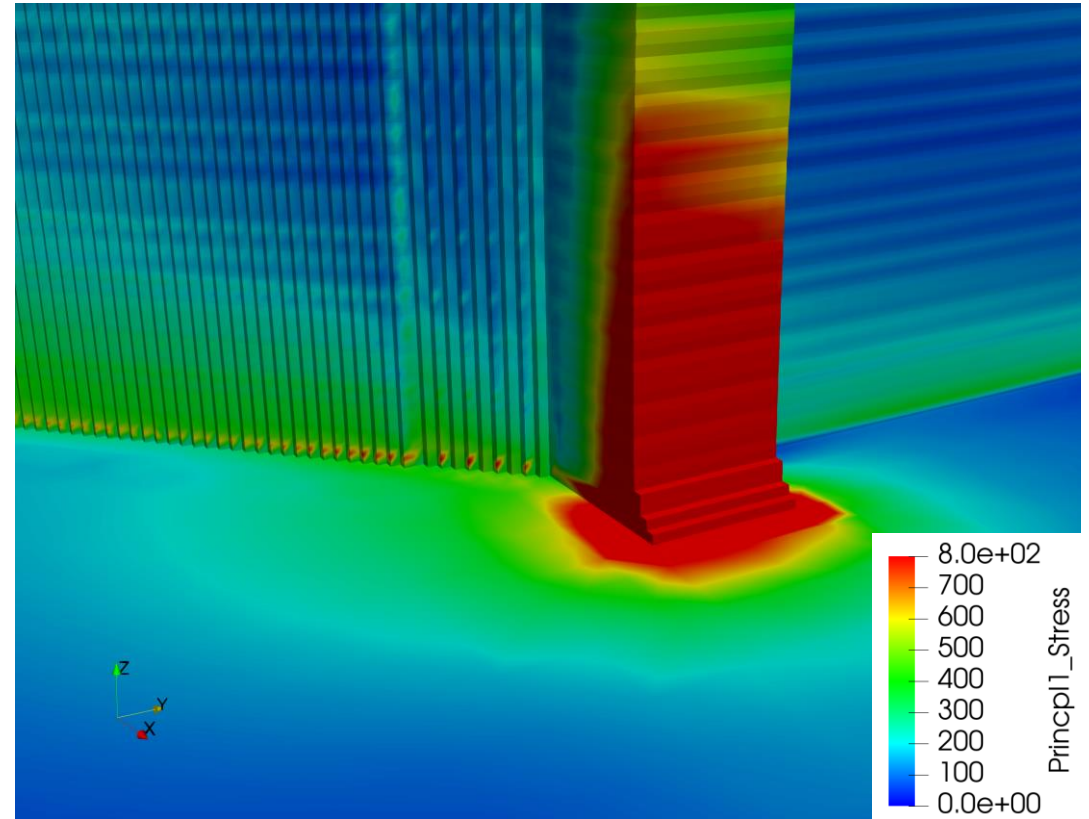
Image courtesy of Ankit Aerospace and Sciaky Inc.



Grid-Fin – Crack locations correlate to high stress/strain regions in the model



Image courtesy of Ankit Aerospace and Sciaky Inc.



Units: MPa